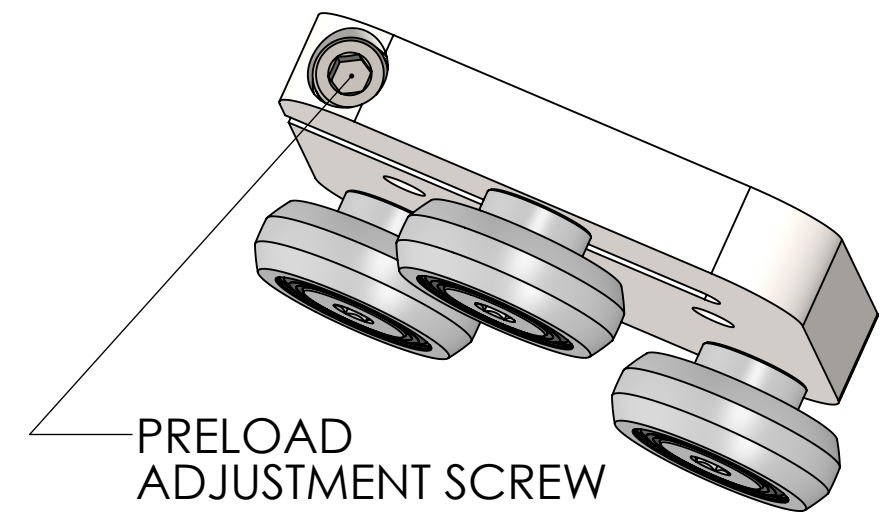
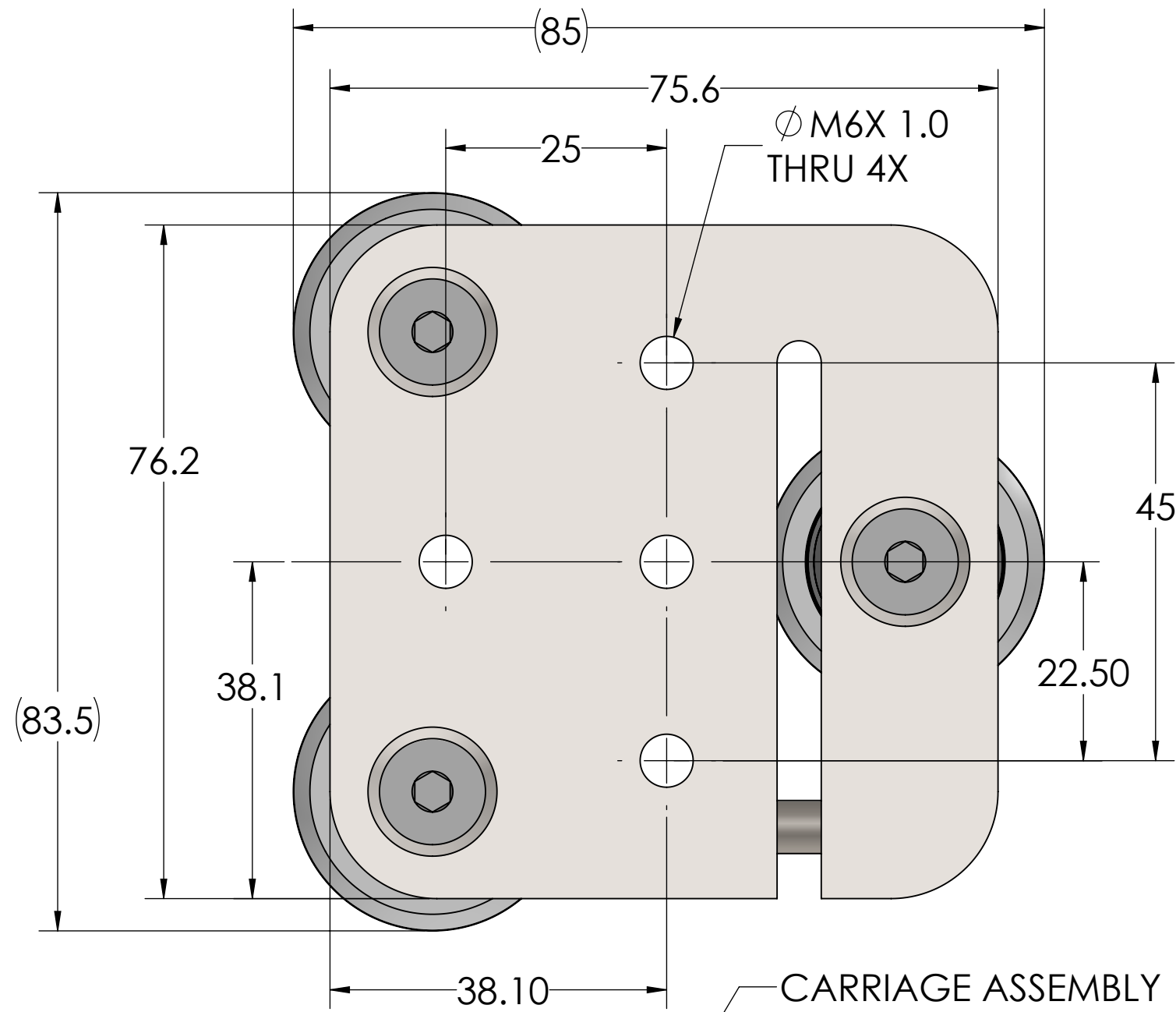
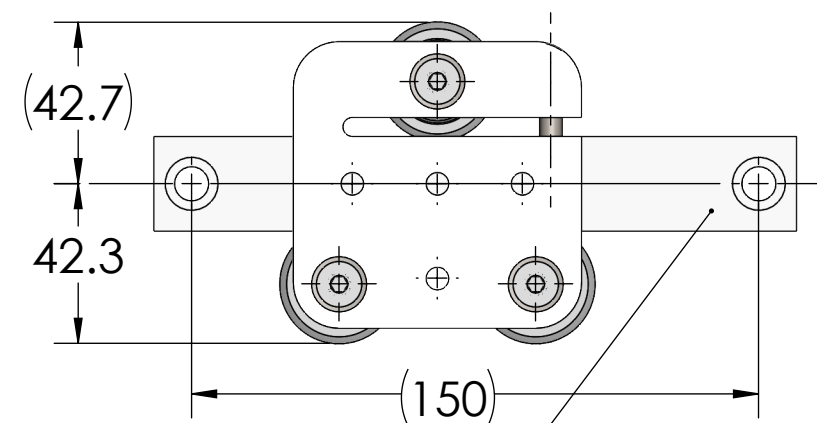


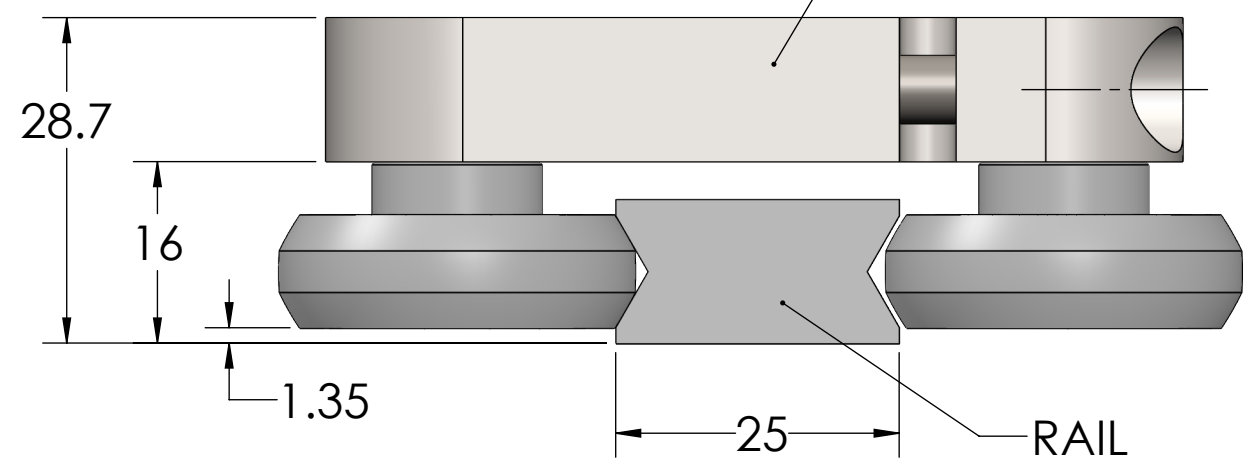
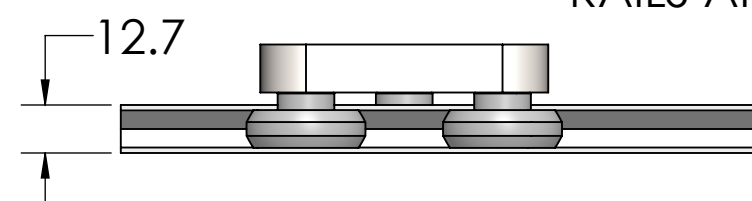
| REVISIONS | | | | |
|-----------|------|-------------|------|----------|
| ZONE | REV. | DESCRIPTION | DATE | APPROVED |
| | | | | |



PRELOAD
ADJUSTMENT SCREW



STRAIGHT RAIL SHOWN: #CR40-L0170
*RAILS ARE PURCHASED SEPERATELY



END VIEW

CARRIAGE ASSEMBLY

RAIL

DIMENSIONS ARE SHOWN IN MILLIMETERS.

| | | | | |
|--|--|------------------------|--------------|--|
| UNLESS OTHERWISE SPECIFIED: | | NAME | DATE | TPA, FORT MILL SC |
| (X.XXX) = CRITICAL / INSPECTION TOLERANCES ANGULAR ±.5 deg. ±.5 deg. ONE PLACE DECIMAL ±.020 in ±.50 mm TWO PLACE DECIMAL ±.010 in ±.25 mm THREE PLACE DECIMAL ±.005 in ±.13 mm | | DRAWN | MAB | |
| GEOMETRIC TOLERANCING PER: ANSI/ASME Y14.1 STANDARD | | APPROVED | DESCRIPTION: | |
| MATERIAL SEE NOTES FINISH SEE NOTES | | THIRD ANGLE PROJECTION | | CR40-C3-M6 WITH CR40-L0170 ASSEMBLY |
| DO NOT SCALE DRAWING | | | | SIZE B DWG. NO. CR40-C3-M6 REV A |
| | | SCALE: 1:1 | | WEIGHT: SHEET 1 OF 1 |

PROPRIETARY AND CONFIDENTIAL
 THE INFORMATION CONTAINED IN THIS DRAWING IS THE SOLE PROPERTY OF THE PRECISION ALLIANCE (TPA) LOCATED IN FORT MILL, SOUTH CAROLINA. ANY REPRODUCTION IN PART OR AS A WHOLE WITHOUT THE WRITTEN PERMISSION OF TPA IS PROHIBITED.