

Product Overview

PM - BEARINGS



PM - BEARINGS

Linear Bearings

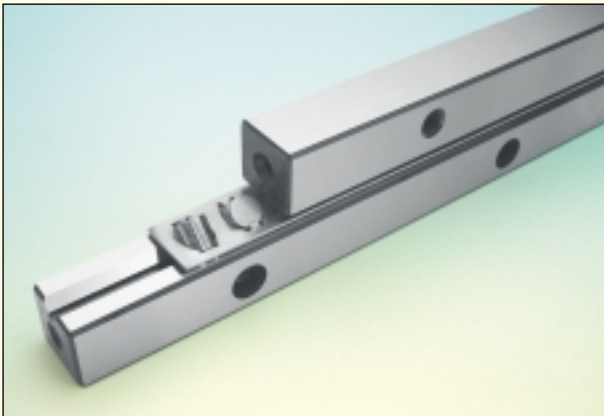
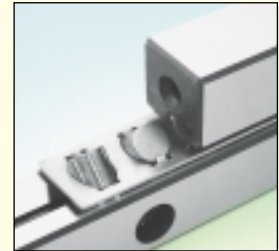
PrecisieMetaal linear bearings are suitable for applications requiring high precision positioning, compact size, limited stroke length and a long operational lifetime. They can support loads and moments in every direction with a very smooth and preloaded operation. A variety of sizes and lengths are offered, providing the designer with maximum flexibility.

For operations with extreme dynamics the **ACC**-solution is available. Our all metal design offers zero cage creep in all mounting orientations.

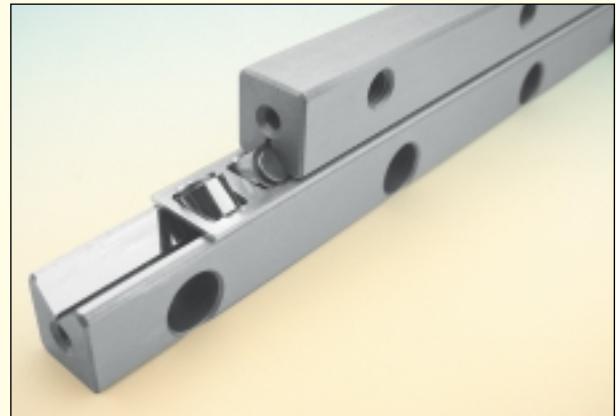
Specifications

Anti-friction guideways are made of bearing steel No. 1.3505 or 1.2842, through-hardened 58 – 62 Hrc. All products can be supplied in stainless steel or with various platings.

Max. length of one piece 1400 mm. Longer lengths will be ground together and can be matched.



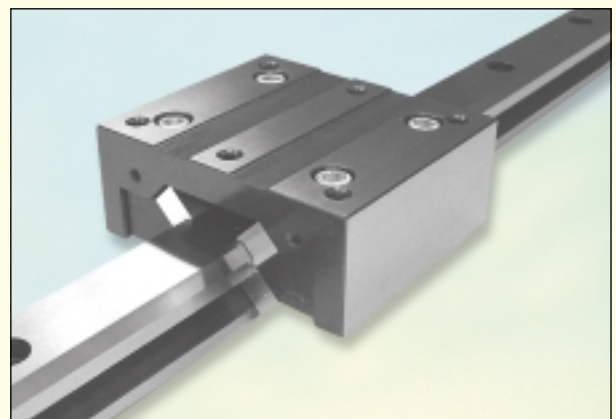
Crossed roller type **RSD**, fitted with cylindrical rollers or balls. Roller diameter sizes 1.5 – 24 mm.



Crossed roller type **RSDE**, fitted with cylindrical rollers. Thanks to the enlarged contact area of the rolling surface the load ratings are 3 x higher. Roller diameter sizes 3, 4, 6 and 9 mm.



Type **N+O** and **M+V**, with needle bearings offer extremely high stiffness and rigidity.



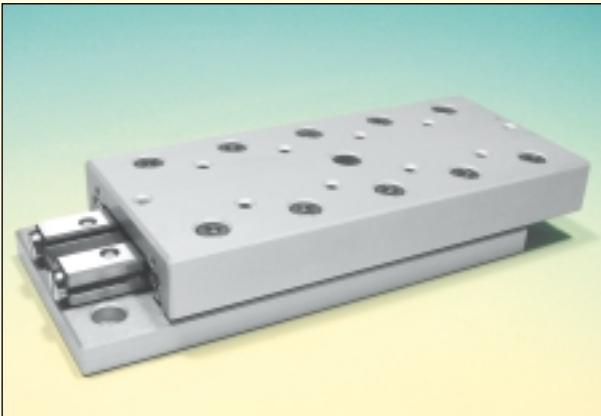
Needle guide precision type **PNUA**. Offers a high rigidity and compact size. Max. load capacity 175.500 N.

PM - BEARINGS

Frictionless Precision Slides

PM frictionless slides, are ready-to-install 1-axis components for precise limited linear movements. The crossed roller slides, use PM linear bearings, are factory pre-loaded, to assure high accuracy, extremely low uniform coefficient of friction (<0.003) and a long operation lifetime.

Each type comes with mounting holes drilled to a standard configuration to permit quick assembly in the application. The mounting surfaces of the slides are precision ground, to achieve the best possible operating results.



Crossed roller table type **RT** (steel/cast-iron) and lightweight model **RTA** (aluminium). Strokelength 10–950 mm. Max. loadcapacity 71.550 N.



Low profile crossed roller table type **RTS** (steel). Strokelength 12–130 mm. Max. loadcapacity 3.672 N



Dust-protected roller table type **RTNG** (steel /cast-iron). Strokelength 10–250 mm. Max. loadcapacity 35.100 N.



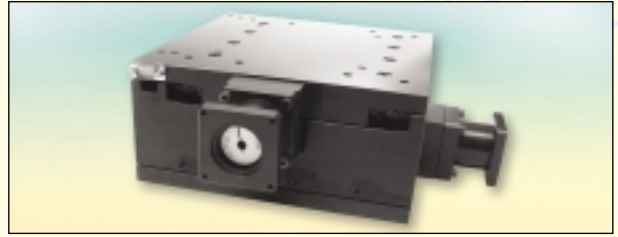
Miniature precision stainless steel ball slide type **PMM**. Strokelength 5–70 mm. In 3 sizes available. Weight 2–70 grams. For rapid and precise linear motions.

PM - BEARINGS

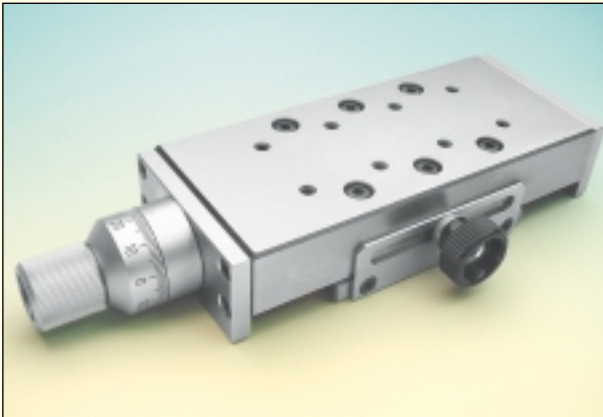


Positioning Tables and Stages

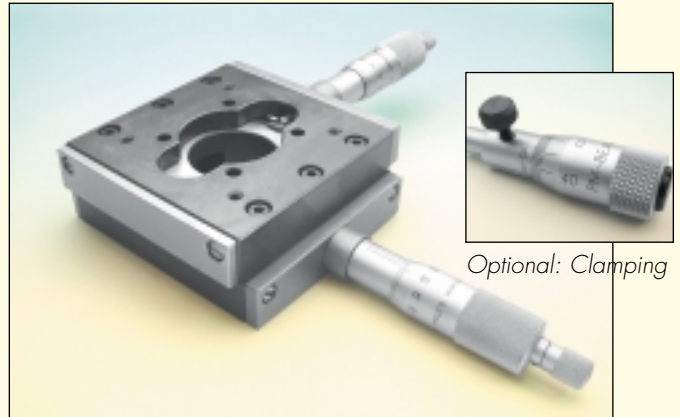
PM positioning roller tables and stages offer high precision positioning. They can be equipped with leadscrews, scaling (0.01 and 0.02mm read outs) as well with precision ball screws, limit switches, motors and encoders. For more detailed information please consult PM – BEARINGS.



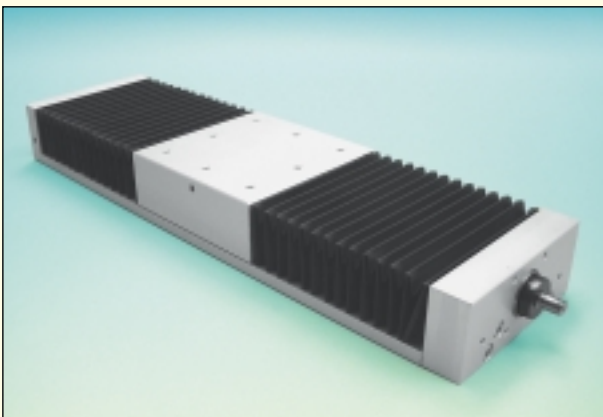
Modular square X-Y stages **MSS**, with crossed roller or needle roller bearings. Ball screws with different leads and accuracies. Stroklength 100x100 up to 300x300. With standard Nema motor mount.



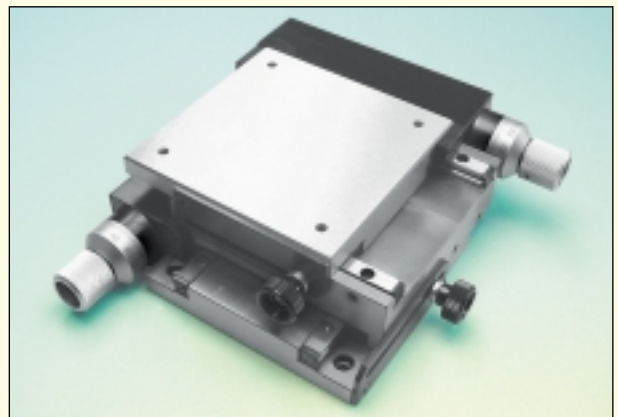
Miniature roller table type **RT-SRM** (steel).
Stroklength 25–150 mm.
Max. loadcapacity 4.760 N.



Micrometer roller table type **MT** (steel), reading accuracy micrometer 0.01 mm.
Stroklength 7–50 mm. Max. loadcapacity 7.020 N.
As XY-stage type **KMT** available.



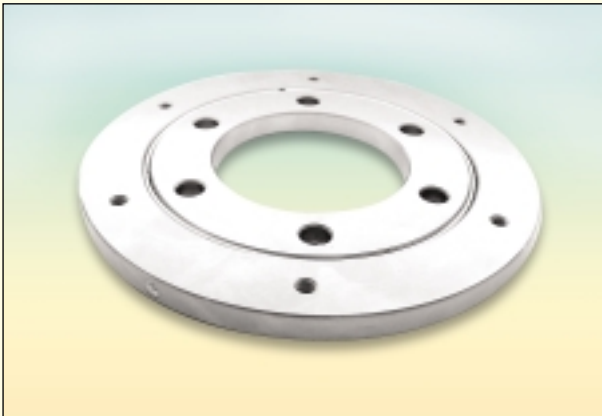
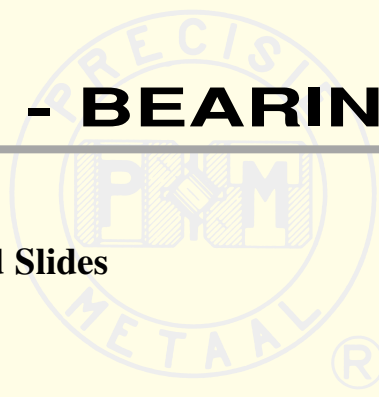
Roller table type **RTNC** (aluminium) with ball screw with pre-loaded double nut and protection bellows. Linear bearings type M+V for high stiffness and precision. Stroklength 100 – 800 mm.



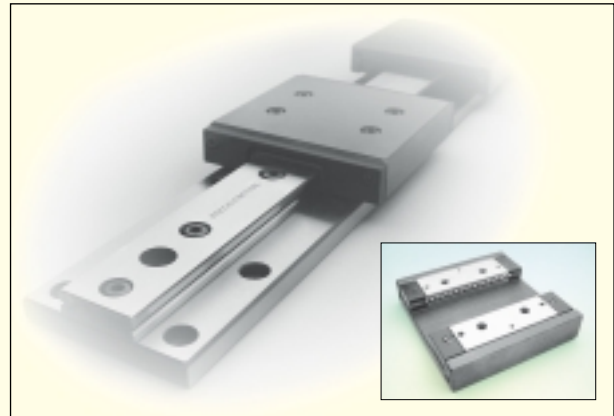
XY-stage type **KT-3-SRM** (steel), with clamping on both axis. Stroklength 25-100 mm.
Reading accuracy 0.01 mm.
Max. loadcapacity 2.000 N.

PM - BEARINGS

Other Related Bearings and Slides



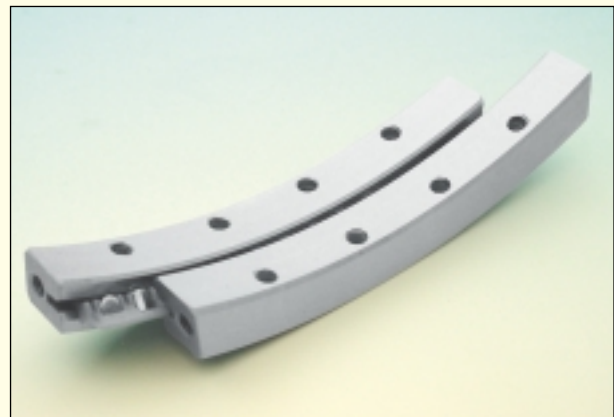
Flat mounted table bearing **FMB**, currently available in sizes up to 500 mm O.D. Guaranteeing high precision, stiffness and low friction. FMB bearings... Accuracy in a Smaller, Simpler, Package



Precision linear bearing for unlimited travel, consisting of: base plate type **UT**, double-sided track-rail type **DS** and slide type **US** for recirculating units type **UK** (ball type) and type **UR** (roller type).



Frictionless ringslides type **RPM** (stainless steel). They allow the user a precision curved movement, almost free of friction and pre-loaded. Ball diameter 3 mm. Rotating range max 360°.



Crossed roller Gonio bearing type **RGB**, fitted with balls or cylindrical rollers. They allow the user a frictionless precision curved movement without play. For roller diameter 2 and 3 mm. Rotating range approx. 10°.

PM - BEARINGS



PM: top quality used in high tech equipments

PM – BEARINGS is specialized in designing and manufacturing linear bearings in top quality. Thanks to a long history experience, new findings in research, combined with **innovating linear technology**, PM products meet the highest accuracy and quality demands of today's industry and are successful in use worldwide.



Worldwide representation

Made by PM means the same high quality, technical support and follow-ups whether in Asia, the U.S.A. or Europe. Representatives are worldwide selected to serve you with the best technical advice and service guaranteeing fast and reliable deliveries in all local markets.

Our local authorized representative

Head-office
PM– BEARINGS BV
Galileistraat 2, 7701 SK Dedemsvaart
P.O. Box 174, 7700 AD Dedemsvaart
The Netherlands
Tel. +31 (0)523 61 22 58
Fax +31 (0)523 61 52 90
E-mail: info@pmbearings.nl
Website: www.pmbearings.nl

