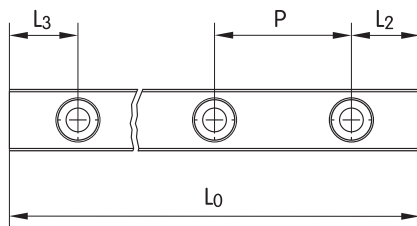


3. Ordering Information

3.1 Order Designation

An example of the miniature linear guide series part numbering systems is shown in the following example.



3.2 Rail Length

When the required length exceeds L_{max} , two or more connected pieces are provided. Please contact the technical service department for related information.

Model Number											
MR	9	M	N	SS	2	V0	P	-120L	-10	-10	II
											No. of rails on the same moving axis
											Starting hole pitch (mm)
											End hole pitch (mm)
											Rail length (mm)
											Accuracy classes: N:normal, H:high, P:precision
											Preload classes: V0:clearance, V1:light preload(0.02C)
											Quantity of the runner block
											Seals: SS: endseals, UU: endseals + bottomseals
											Runner block type: L: long type, N: standard type,
											Rail type: M:standard width, W:wide type
											Size: such as 15, 12, 9, 7, 5, 3
											Product type: MR Miniature Linear Guide MRU Miniature Upward Screwing Linear Guide

Standard Type

Rail Length	Size					
	3M	5M	7M	9M	12M	15M
Single piece standard rail length (mm)	30	40	40	55	70	70
	40	55	55	75	95	110
	50	70	70	95	120	150
		85	85	115	145	190
		100	100	135	170	230
			130	155	195	270
				175	220	310
				195	245	350
				275	270	390
				375	320	430
					370	470
					470	550
					570	670
						870
Hole pitch(mm)	10	15	15	20	25	40
L2,L3 _{min}	3	3	3	4	4	4
L2,L3 _{max}	5	10	10	15	20	35
L _{max}	300	930	930	920	930	930

Wide Type

Rail Length	Size					
	3W	5W	7W	9W	12W	15W
Single piece standard rail length (mm)	40	50	50	50	70	110
	55	70	80	80	110	150
	70	90	110	110	150	190
			110	140	140	190
				130	170	230
					150	200
						200
						270
						310
						430
						550
						790
Hole pitch(mm)	15	20	30	30	40	40
L2,L3 _{min}	3	4	3	4	4	4
L2,L3 _{max}	10	15	25	25	35	35
L _{max}	940	940	940	940	940	940