



**STANDARD LINEAR SYSTEM:**

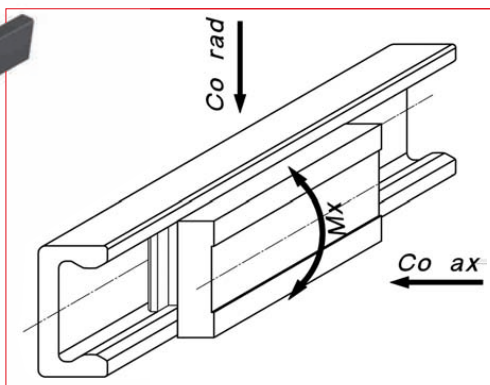


The MONORACE system is a rigid linear system, used with one or two rails. The system is composed of MRL-MRS-rails and RV guiding sliders, which contain guiding rollers type RCV-REV. The slider is composed of a ground steel body with protective surface treatment. The sliders come standard with 3 either 5 ROLLERACE rollers.



Rail type	Speed (m/s)
MR18	4
MR28	6
MR43	8

Working temperature -  
30° / + 80° Celsius



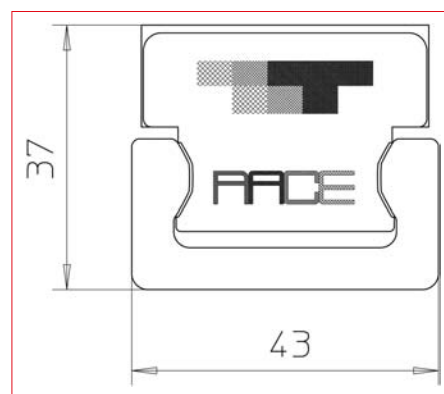
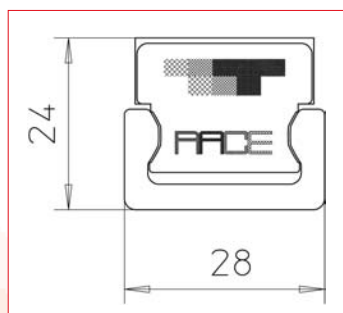
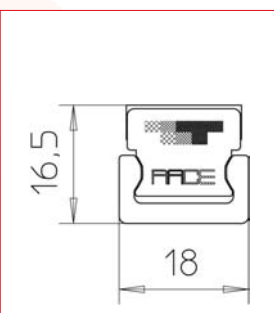
**Order codes**  
**MONORACE**  
**MR18S1520**  
 18mm rail size of length 1520mm with c'sunk holes.  
**MR28S1760**  
 28mm rail size of length 1760mm with c'sunk holes.  
**MR43L3280**  
 43mm rail size of length 3280mm with cylindrical holes.

Thanks to optimized design, the Monorace system guarantees load and moment capacities significantly higher than its competitors, within the same compact dimensions. When used as single rail, the system allows for loads and moments in all directions.

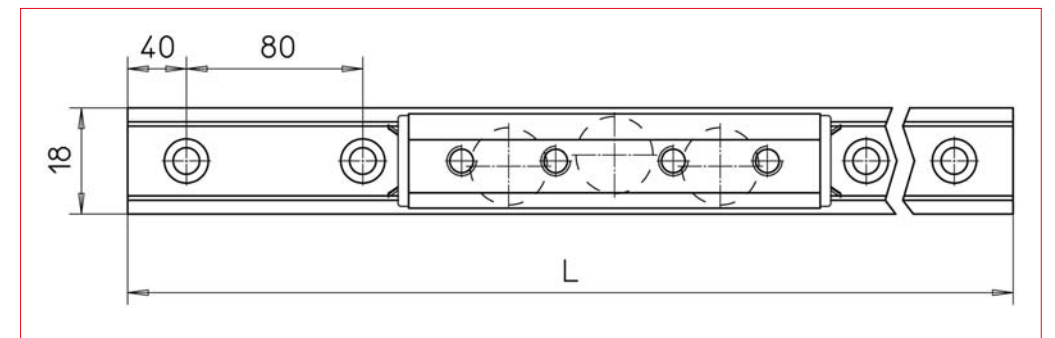
When more than one rail is used, the rails must be well aligned to assure smooth movement and to eliminate binding.

The rails are available in three sizes: 18mm, 28mm, and 43mm in order to meet a wide range of load capacity requirements.

Rail type	Slider	Rad.Co	Ax.Co	Mx
Size (in mm)	type	Radial Co (N)	Axial Co (N)	Mx (Nm)
MR18	RV18-3	1600	1000	5,2
MR28	RV28-3	3200	2000	15,3
MR43	RV43-3	7200	4500	50,1
MR18	RV18-5	2400	1500	9,3
MR28	RV28-5	4800	3000	31,1
MR43	RV43-5	10800	6700	107,2



**MONORACE18**

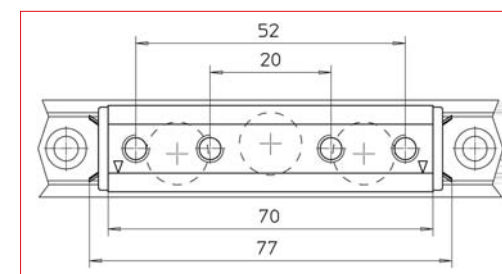


Rail MR18

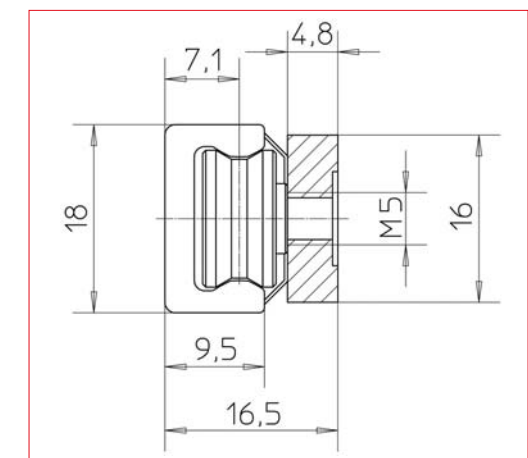
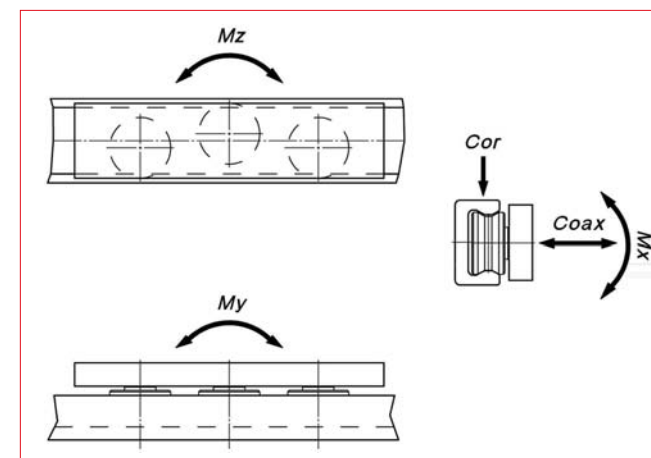
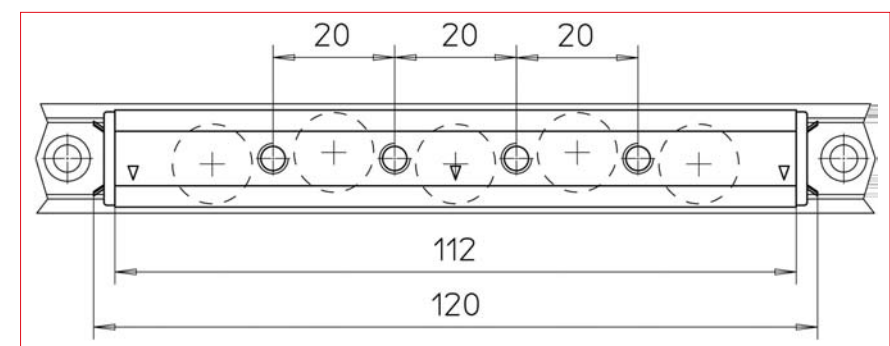
Lengths															
160	240	320	400	480	560	640	720	800	880	960	1040	1120	1200	1280	1360
1440	1520	1600	1680	1760	1840	1920	2000	2080	2160	2240	2320	2400	2480	2560	2640
2720	2800	2880	2960												

For further details, see page 5

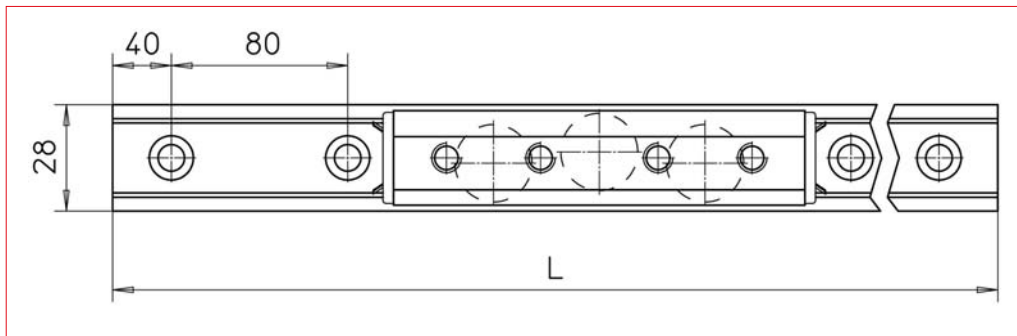
Slider RV18-3



Slider RV18-5



Slider type	C (N)	Radial Co (N)	Axial Co (N)	Mx (Nm)	My (Nm)	Mz (Nm)
RV18-3	4000	1600	1000	5,2	16,5	20
RV18-5	6000	2400	1500	9,3	46,1	50,3

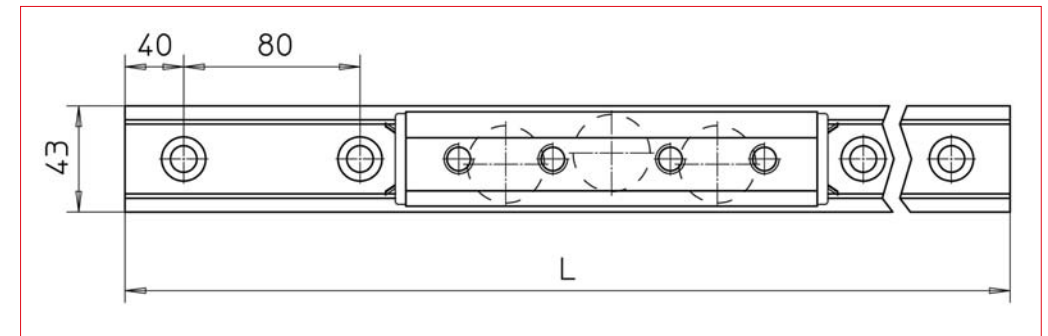


MONORACE 28

Rail MR28

Lengths															
240	320	400	480	560	640	720	800	880	960	1040	1120	1200	1280	1360	1440
1520	1600	1680	1760	1840	1920	2000	2080	2160	2240	2320	2400	2480	2560	2640	2720
2800	2880	2960	3040	3120	3200	3280	3360	3440	3520	3600	3680	3760	3840	3920	4000

For further details, see page 5

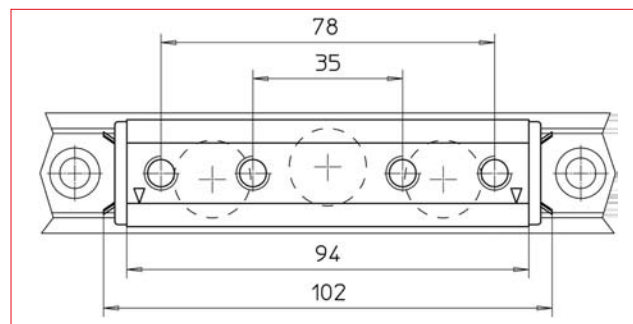


MONORACE 43

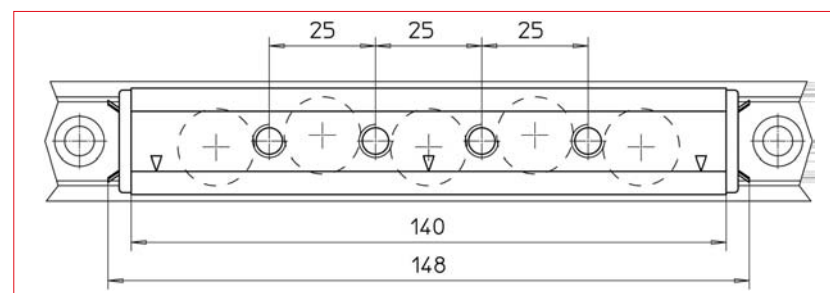
Rail MR43

Lengths															
400	400	480	560	640	720	800	880	960	1040	1120	1200	1280	1360	1440	1520
1600	1680	1760	1840	1920	2000	2080	2160	2240	2320	2400	2480	2560	2640	2720	2800
2880	2960	3040	3120	3200	3280	3360	3440	3520	3600	3680	3760	3840	3920	4000	

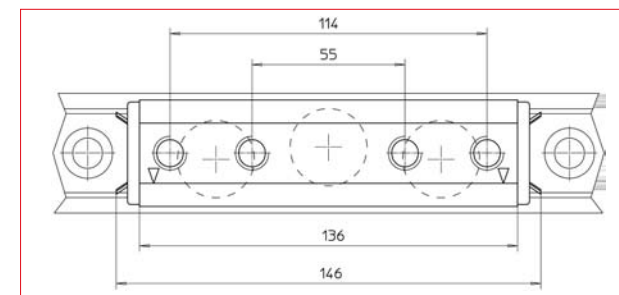
For further details, see page 5



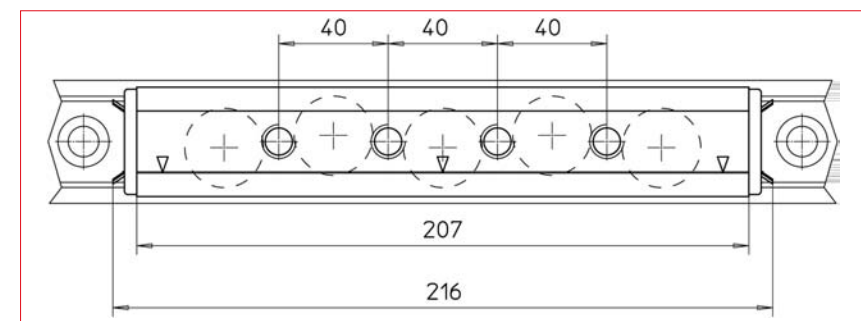
Slider RV28-3



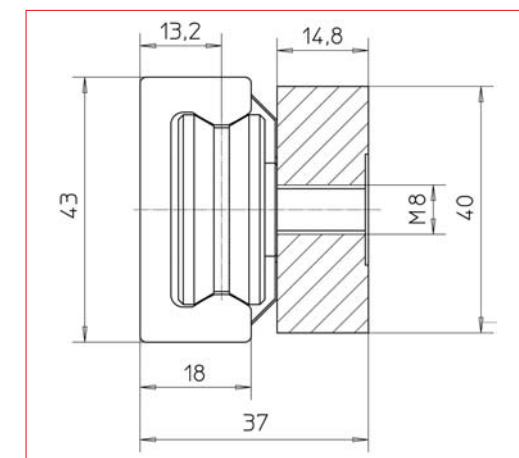
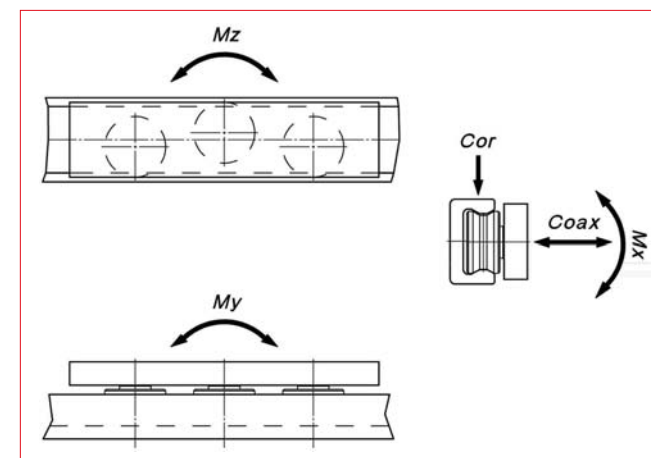
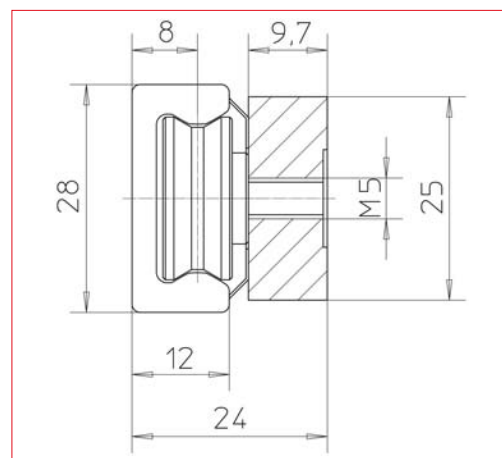
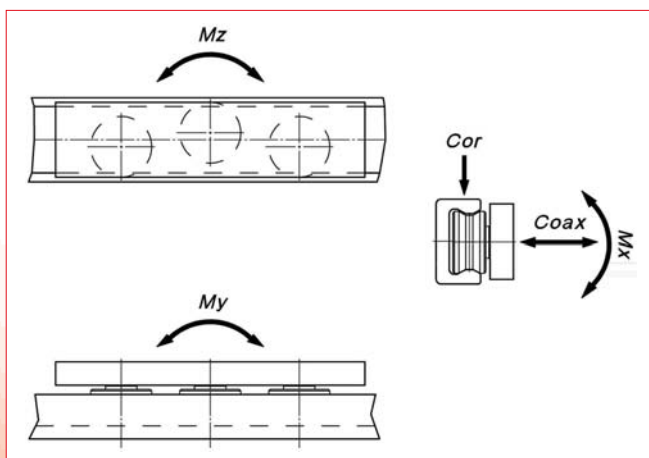
Slider RV28-5



Slider RV43-3



Slider RV43-5



Slider type	C (N)	Radial Co (N)	Axial Co (N)	Mx (Nm)	My (Nm)	Mz (Nm)
RV28-3	6600	3200	2000	15,3	43,5	48
RV28-5	9900	4800	3000	31,1	115,2	120

Slider type	C (N)	Radial Co (N)	Axial Co (N)	Mx (Nm)	My (Nm)	Mz (Nm)
RV43-3	18000	7200	4500	50,1	157,3	165
RV43-5	27000	10800	6700	107,2	394	410