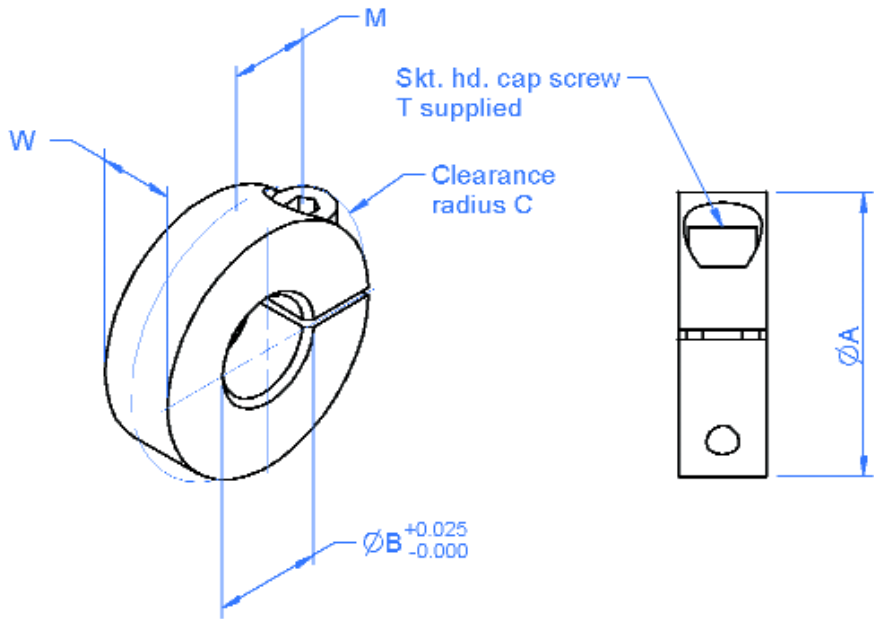


Gear Clamps - Low Inertia



General Information

All dimensions in mm
 General tolerances: $\pm 0.13\text{mm}$
 Material:
 Aluminium alloy L168

Associated Products

Clamp hub gears

Visit our online catalogue for associated products at: www.reliance.co.uk

Part number selection table

Part Number	To suit gear of bore dia	Bore ØB	O.Dia ØA	Width W	Clearance radius C	Screw supplied T	Screw offset M
CGAM-2A	2	3.6	12.0	5.0	7.2	M2	3.5
CGAM-3A	3	4.6	13.0		7.8		4.0
CGAM-4A	4	5.6	17.0	7.0	10.0	M3	5.0
CGAM-5A	5	6.6	18.0		10.6		5.5
CGAM-6A	6	7.6	19.0		11.3		6.2
CGAM-8A	8	9.6	24.0	9.0	13.8	M4	7.5
CGAM-10A	10	11.6	26.0		14.8		8.5
CGAM-12A	12	13.6	28.0		16.2		9.8

- Used with standard clamp hub style gears and pinions.

Non-standard options, please enquire....

- Imperial bores.