



# Anti-backlash Synchro Gears

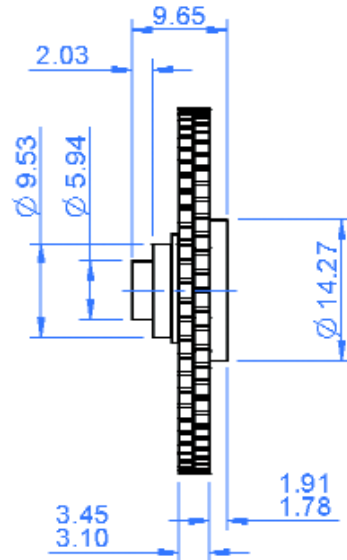
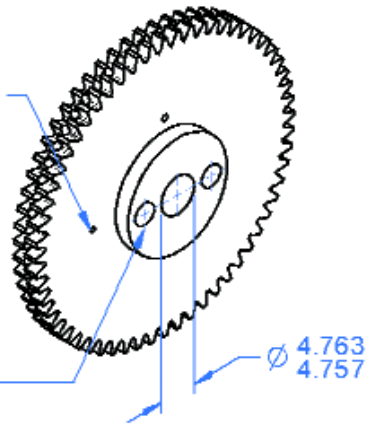
4.76mm Bore

## General Information

All dimensions in mm  
 General tolerances:  
 ±0.13mm  
 Material:  
 Stainless steel  
 or  
 Aluminium alloy  
 Pressure angle 20°

Fitting pin  
to be removed  
after meshing

Two holes to  
suit lugs on  
drive washer



## Associated Products

Spur gears

Visit our online catalogue for associated products at: [www.reliance.co.uk](http://www.reliance.co.uk)

## Part number selection table

Example Part No:- **AS06S1B4.7F33A- 60**

Bore Size	Standard Modules	Basic Part Number Standard Materials		Number of Teeth	
		Stainless Steel	Aluminium Alloy	Min	Max
4.76	0.6	AS06S1B4.7F33A-	AS06A1B4.7F33A-	30	102
	0.5	AS05S1B4.7F33A-	AS05A1B4.7F33A-	36	123
	0.4	AS04S1B4.7F33A-	AS04A1B4.7F33A-	44	154
	0.3	AS03S1B4.7F33A-	AS03A1B4.7F33A-	57	207
	0.25	AS025S1B4.7F33A-	AS025A1B4.7F33A-	68	248
	0.2	AS02S1B4.7F33A-	AS02A1B4.7F33A-	84	311

- Standard gear quality AQ10 - see page 56.
- To suit size 11, 15, & 18 synchros.
- Material and treatment specifications - see page 59.

## Non-standard options, please enquire....

- Higher gear qualities - see page 56.
- Alternative modules.
- Imperial diametral pitches.
- Imperial bore size 0.187".

Standard Product Sales : ☎ +44 (0)1484 601060  
[www.reliance.co.uk](http://www.reliance.co.uk)

✉ +44 (0)1484 601061  
[sales@reliance.co.uk](mailto:sales@reliance.co.uk)