



Clamp Hub Spur Gear

2 - 5mm Bore

General Information

All dimensions in mm

General tolerances:

±0.13mm

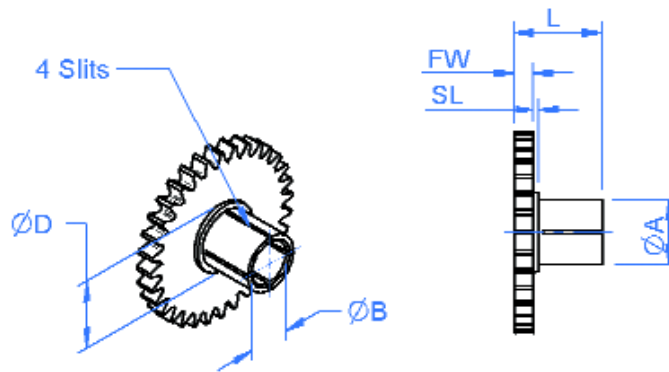
Material:

Stainless steel

or

Aluminium alloy

Pressure angle 20°



Associated Products

Anti-backlash gears

Shafts

Bearings

Gear clamps

Visit our online catalogue for associated products at: www.reliance.co.uk

Drawing dimension table

Bore Size Nom	Bore Dia ØB	Overall Length L	Gear Face width FW	Clamp Dia ØA	Shoulder Dia ØD	Shoulder Length SL	Recommended Clamp #
2	2.003	7	2	3.60	7.4	0.50	CGAM-2A or CGM1-2
	1.995	9	4	3.56			
3	3.003	7	2	4.60	6.6	0.50	CGAM-3A or CGM1-3
	2.995	9	4	4.56			
4	4.003	9	2	5.60	8.4	0.50	CGAM-4A or CGM1-4
	3.995	11	4	5.56			
5	5.003	9	2	6.60	7.6	0.50	CGAM-5A or CGM1-5
	4.995	11	4	6.56			

See gear clamps on pages 52 - 53 for information.

- Standard gear quality AQ10 - see page 56.
- Material and treatment specifications - see page 59.

Non-standard options, please enquire....

- Higher gear qualities - see page 56.
- Special 0.120" bore to suit resolvers available.
- Alternative modules.
- Imperial diametral pitches.
- Imperial bore sizes 5/64", 0.120", 1/8" & 3/16".
- Larger numbers of teeth.

Standard Product Sales : ☎ +44 (0)1484 601060

www.reliance.co.uk

✉ +44 (0)1484 601061

sales@reliance.co.uk



Part number selection table

Example Part No:- **C06S1B5 F2A- 25**

Bore Size Nom	Standard Modules	Basic Part Number Standard Materials		Face Width Dim FW	Number of Teeth		
		Stainless Steel	Aluminium Alloy		Min	Max	
				F2A		F4A	
2	0.6	C06S1B2	C06A1B2	F2A- (2mm) or F4A- (4mm)	14 †	56	127
	0.5	C05S1B2	C05A1B2		14 †	67	152
	0.4	C04S1B2	C04A1B2		15 †	85	190
	0.3	C03S1B2	C03A1B2		17	114	254
	0.25	C025S1B2	C025A1B2		18	137	304
	0.2	C02S1B2	C02A1B2		20	172	381
3	0.6	C06S1B3	C06A1B3	F2A- (2mm) or F4A- (4mm)	15 †	25 #	
	0.5	C05S1B3	C05A1B3		16 †	29 #	
	0.4	C04S1B3	C04A1B3		18	36 #	
	0.3	C03S1B3	C03A1B3		20	47 #	
	0.25	C025S1B3	C025A1B3		22	56 #	
	0.2	C02S1B3	C02A1B3		25	69 #	
4	0.6	C06S1B4	C06A1B4	F2A- (2mm) or F4A- (4mm)	17	25 #	
	0.5	C05S1B4	C05A1B4		18	29 #	
	0.4	C04S1B4	C04A1B4		20	36 #	
	0.3	C03S1B4	C03A1B4		24	47 #	
	0.25	C025S1B4	C025A1B4		26	56 #	
	0.2	C02S1B4	C02A1B4		30	69 #	
5	0.6	C06S1B5	C06A1B5	F2A- (2mm) or F4A- (4mm)	19	25 #	
	0.5	C05S1B5	C05A1B5		20	29 #	
	0.4	C04S1B5	C04A1B5		23	36 #	
	0.3	C03S1B5	C03A1B5		27	47 #	
	0.25	C025S1B5	C025A1B5		30	56 #	
	0.2	C02S1B5	C02A1B5		35	69 #	

General Information

All dimensions in mm
 General tolerances: ±0.13mm
 Material:
 Stainless steel or Aluminium alloy
 Pressure angle 20°

Associated Products

Anti-backlash gears
 Shafts
 Bearings
 Gear clamps
 Visit our online catalogue for associated products at:
www.reliance.co.uk

† Gears of 16 teeth or fewer will be modified, see page 63.
 # For greater numbers of teeth, see Reli-a-Grip™ gears on page 24. Although larger numbers of teeth are available on this style if required.

