



Anti-backlash Reli-a-Grip™ Clamp Hub Gears

3 - 6mm Bore

General Information

All dimensions in mm
General tolerances:

±0.13mm

Material:

Stainless steel
or
Aluminium alloy

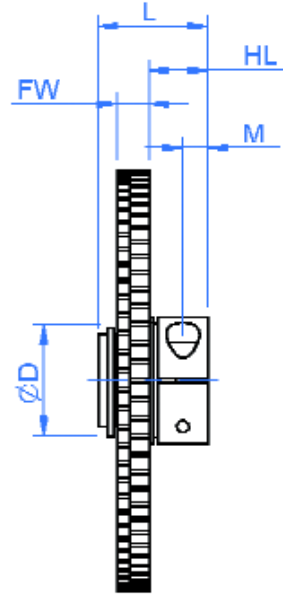
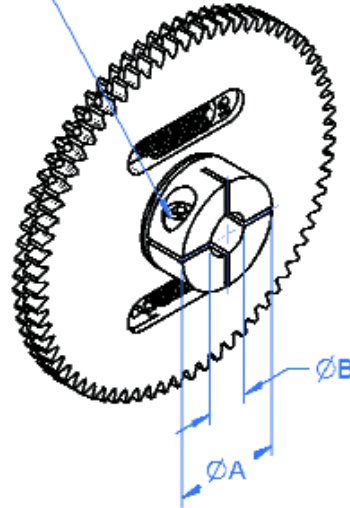
Pressure angle 20°

Associated Products

Clamp hub gears
Shafts
Bearings

Visit our online catalogue for associated products at:
www.reliance.co.uk

Skt. hd. cap screw S supplied



Drawing dimension table

Bore Size	Bore Dia	Overall Length	Gear Face Width	Reli-a-Grip™ Dia	Clearance Dia ØD	Hub Length	Hole Position	Set Screw
Nom	ØB	L	FW	ØA	Max †	HL	M	S
3	3.003 2.995	11.25	3.60 3.17	13.00	15.00	6.0	2.50	M1.6
4	4.003 3.995							
5	5.003 4.995							
6	6.003 5.995				18.80			

† ØD will not exceed the root diameter of the teeth.

- Standard gear quality AQ10 - see page 56.
- Material and treatment specifications - see page 59.

Non-standard options, please enquire....

- Higher gear qualities - see page 56.
- Alternative modules.
- Imperial diametral pitches.
- Imperial bore sizes 1/8", 3/16" & 1/4".

Standard Product Sales : ☎ +44 (0)1484 601060
www.reliance.co.uk

✉ +44 (0)1484 601061
sales@reliance.co.uk



Part number selection table

Example Part No:- AG06S1B5F35A- 70

Bore Size Nom	Standard Modules	Basic Part Number Standard Materials		Number of Teeth	
		Stainless Steel	Aluminium Alloy	Min	Max
3	0.6	AG06S1B3F35A	AG06A1B3F35A	55	119
	0.5	AG05S1B3F35A	AG05A1B3F35A	66	143
	0.4	AG04S1B3F35A	AG04A1B3F35A	81	180
	0.3	AG03S1B3F35A	AG03A1B3F35A	107	241
	0.25	AG025S1B3F35A	AG025A1B3F35A	128	289
	0.2	AG02S1B3F35A	AG02A1B3F35A	159	362
4	0.6	AG06S1B4F35A	AG06A1B4F35A	55	119
	0.5	AG05S1B4F35A	AG05A1B4F35A	66	143
	0.4	AG04S1B4F35A	AG04A1B4F35A	81	180
	0.3	AG03S1B4F35A	AG03A1B4F35A	107	241
	0.25	AG025S1B4F35A	AG025A1B4F35A	128	289
	0.2	AG02S1B4F35A	AG02A1B4F35A	159	362
5	0.6	AG06S1B5F35A	AG06A1B5F35A	55	119
	0.5	AG05S1B5F35A	AG05A1B5F35A	66	143
	0.4	AG04S1B5F35A	AG04A1B5F35A	81	180
	0.3	AG03S1B5F35A	AG03A1B5F35A	107	241
	0.25	AG025S1B5F35A	AG025A1B5F35A	128	289
	0.2	AG02S1B5F35A	AG02A1B5F35A	159	362
6	0.6	AG06S1B6F35A	AG06A1B6F35A	55	119
	0.5	AG05S1B6F35A	AG05A1B6F35A	66	143
	0.4	AG04S1B6F35A	AG04A1B6F35A	81	180
	0.3	AG03S1B6F35A	AG03A1B6F35A	107	241
	0.25	AG025S1B6F35A	AG025A1B6F35A	128	289
	0.2	AG02S1B6F35A	AG02A1B6F35A	159	362

General Information

All dimensions in mm
General tolerances: ±0.13mm
Material:
Stainless steel or Aluminium alloy
Pressure angle 20°

Associated Products

Clamp hub gears
Shafts
Bearings

Visit our online catalogue for associated products at:
www.reliance.co.uk